

# UNIC

UNIC offers high-performance offshore load handling equipments

# OCEAN CRANE

## UBV 1204

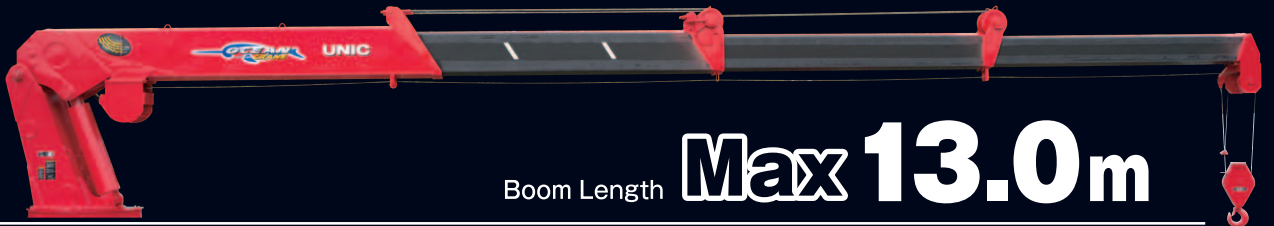


Maximum lifting capacity **3,050kg × 6.5m**

**High Lifting Capacity & Long Reach**

# 4

Boom Sections



Boom Length

# Max 13.0m

### Excellent Durability & Perfect Anticorrosive Design for extremely tough condition

- Zinc coated main body (Hot-dip galvanizing)
- Stainless-steel hose joints, couplings, grease nipples, control levers
- Double-layered hard chromium coating applied raising cylinder rod
- Hexavalent Chromium - Free (Eco-friendly product)



Stainless steel control levers.



Square base.



Winch



**OPTION**  
RC-500HA Series

# UNIC OCEAN CRANE Specifications

Crane model		UBV1204
Maximum Lifting Capacity	3,050kg at 6.5m	
Maximum Hook Height	13.7m	
Working Radius	Min. 0.33m to Max. 12.5m	
Boom Length	Min. 4.6m to Max. 13.0m	
Boom Sections	4	
Boom Extending Speed	8.4m/84s(at40ℓ/min)	
Boom Raising Speed	-0.5° to 82°/30s(at40ℓ/min)	
Winch Single Line Pull	14.7kN(1,500kgf)	
Winch Single Line Speed	20.0m/min at 4th layer (at40ℓ/min)	
Winch Hook Speed	10.0m/min at 4th layer with 2-Part line(at40ℓ/min)	
Winch Wire Rope	IWRC 6×Fi(29) Galvanized GRADE B 10mm×78m(breaking strength:78.4kN(8,000kgf))	
Slewing Range	360° continuous rotation on a ball bearing race	
Slewing Speed	1.0rpm(at40ℓ/min)	
Safety Devices	Pressure relief valve for hydraulic circuit / Counterbalance valves for boom raising and boom telescoping cylinders,and winch motor / Boom angle indicator with load indicator / Hook safety latch / Automatic mechanical brake for winch / Load meter / Over-winding alarm and automatic stop	
Rust Prevention	Inner and outer surfaces of structural parts:Zinc coating(excepting cylinders)/ Raising Cylinder rod:Hard chromium coating with double layers / Gear cases for slewing:Zinc coating / Raising Cylinder pipe:Stainless steel / Couplings:Stainless steel / Wire ropes:Coated type / Miscellaneous parts:GEOMET finish, and other coatings / Painting:With special rust prevention paint	
Recommended Pump Capacity	Rated Pressure	19.6MPa(200kgf/cm <sup>2</sup> )
	Rated delivery	40ℓ

## Rated Loads

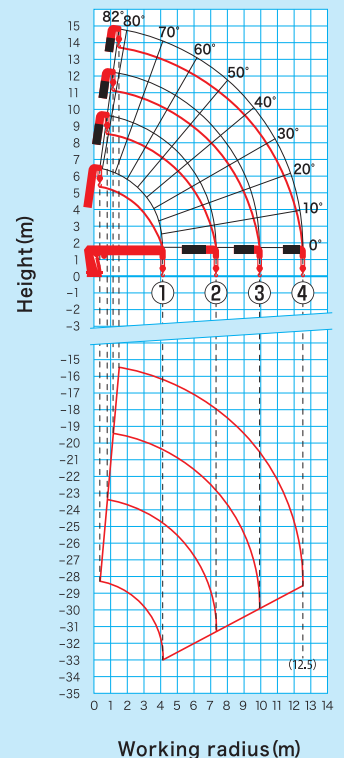
(unit : kgf)

Working radius(m)		3.0	4.0	4.5	5.0	6.0	6.5	7.0	8.0	9.0	10.0	11.0	12.0	12.5	
Boom length															
①	4.6m	3050	3050	3050(4.1m)											
① + ②	7.8m	3050	3050	3050	3050	3050	3050	2850	2000(7.3m)						
① + ② + ③	10.4m	3050	3050	3050	3050	3050	3050	2850	2500	2200	1400(9.9m)				
① + ② + ③ + ④	13.0m	3050	3050	3050	3050	3050	3050	2850	2500	2200	2050	1700	1500	1000	

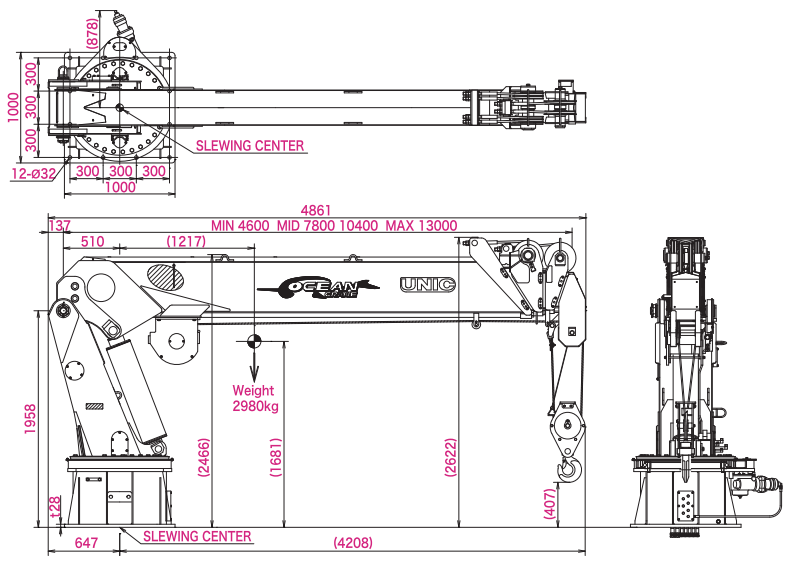


- The table shows actual working radius including a possible boom deflection with a load applied when the crane has been installed horizontally.
- Rated load is based only on the suspending strength of the crane and stability of the crane mounted ship is not considered. Therefore, operate the crane while paying utmost attention to the stability of the ship.
- The weight of hook 50kg, slings, and any accessories attached to the boom or landline must be deducted from the above rated loads in the chart.
- Do not to overload crane. If causes the crane breaks.
- In accordance with our policy of constant product improvement, all specifications are subject to change without notice or obligations.

## Working Range



## Drawing



## FURUKAWA UNIC CORPORATION

5-3, Nihonbashi 1-chome, Chuo-ku, TOKYO 103-0027 JAPAN  
 Phone:(81-3) 3231-8613 / Facsimile:(81-3) 3231-8261  
 URL <http://www.furukawaunic.co.jp/english/>