

UNIC



UNIC OCEAN CRANE

UBV500J Series

UBV340J Series

UBV260J Series



Safe & Seaworthy

UNIC Ocean Crane

Easy Operation, Outstanding Performance, safety and efficiency.



High-efficiency functions

UNIC ocean crane are highly regarded for their smooth, efficient operation in drift-net fishing, fish-breeding, and other marine operations. Fast lifting speed: 17m/min. Outstanding lift capacity: 3030kg. Wide operating range: 1°~81°. (UBV500J / UBV340J series)

UNIC's tough, lightweight hexagonal boom, by minimizing side sway and shaking, also ensures safer operations. Safe, easy to operate, high performance-UNIC ocean crane have it all.

Strength and durability

Stainless steel control levers tenaciously resist rust, and all weather-exposed parts and the main body is designed to keep out seawater. Everything--from the booms, base, wire rope, and structural members to even the smallest screws are zinc-dipped inside and out.

The cylinder is hard-chrome plated. UNIC ocean cranes are available in 3 series designed for all types of marine operations: UBV500J(3-5 section boom), UBV340J(3-5 section), and UBV260J(3-4 section).

UBV500J Series

[3030kg lifting capacity/ 3-5 boom section]

Model (boom sections)	Capacity	Working Radius	Hook Height
UBV505J (5)	3030kg at 3.9m	Min 0.51m to Max 13.12m	Max 13.70m
UBV504J (4)	3030kg at 4.1m	Min 0.49m to Max 10.60m	Max 11.20m
UBV503J (3)	3030kg at 4.1m	Min 0.48m to Max 8.10m	Max 8.70m

Boom sections



UBV340J Series

[3030kg lifting capacity/ 3-5 boom section]

Model (boom sections)	Capacity	Working Radius	Hook Height
UBV345J (5)	3030kg at 2.3m	Min 0.53m to Max 12.11m	Max 12.50m
UBV344J (4)	3030kg at 2.5m	Min 0.50m to Max 9.81m	Max 10.20m
UBV343J (3)	3030kg at 2.6m	Min 0.48m to Max 7.51m	Max 8.00m

Boom sections



UBV260J Series

[2630kg lifting capacity/ 3-4 boom section]

Model (boom sections)	Capacity	Working Radius	Hook Height
UBV264J (4)	2630kg at 1.6m	Min 0.43m to Max 8.43m	Max 8.70m
UBV263J (3)	2630kg at 1.6m	Min 0.42m to Max 6.43m	Max 6.70m

Boom sections



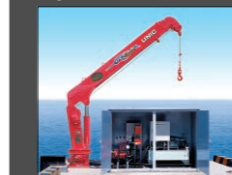
OPTION

Radio remote control

Single line hook

Radi-con RC-500FA-UB2

Hydraulic power unit



Model	SHU03079-1	SHU03079-2
Object crane model	UBV500J/UBV340J /UBV260J Series	UBV500J/UBV340J Series (To quicken the operation speed)
Electric motor output	11kW	15kW
Electric motor type	AC200V / 200V~220V	
Rated delivery	38L/min (UBV500J/UBV340J Series) 29L/min (UBV260J Series)	
Oil tank	130L Capacity	
Maximum rated pressure	20.6Mpa(210kgf/cm ²)	
Weight (Oil is excluded)	310kg	330kg

PHOTO: UBV504 (Fixation type)
※The storage box is an example of the manufacture reference.



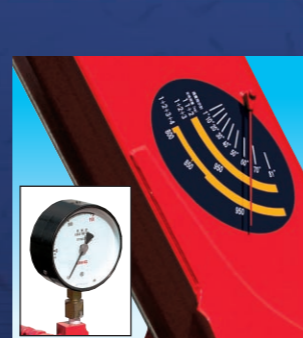
Stainless steel control levers and rust-resistant parts.



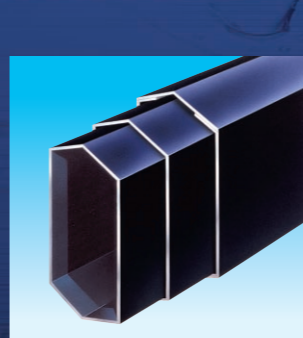
The main body is designed to keep out seawater.



Fast winch hook speed.



Load meter and the load indicator



Hexagonal boom.



Overwinding device.



Square base.



Round base.

Base's shape you can select from 2 types.



Wide operating range!
Boom raising angle: 1°~81°



UNIC OCEAN CRANE Specifications

Model	UBV505J	UBV504J	UBV503J	UBV345J	UBV344J	UBV343J	UBV264J	UBV263J
Maximum lifting capacity	3030kg at 3.9m	3030kg at 4.1m	3030kg at 4.1m	3030kg at 2.3m	3030kg at 2.5m	3030kg at 2.6m	2630kg at 1.6m	2630kg at 1.6m
Maximum hook height	13.7m	11.2m	8.7m	12.5m	10.2m	8.0m	8.7m	6.7m
Working radius	Min.0.51m to Max.13.12m	Min.0.49m to Max.10.60m	Min.0.48m to Max.8.10m	Min.0.53m to Max.12.11m	Min.0.50m to Max.9.81m	Min.0.48m to Max.7.51m	Min.0.43m to Max.8.43m	Min.0.42m to Max.6.43m
Boom length/ sections	Min.3.75m to Max.13.35m/5	Min.3.57m to Max.10.84m/4	Min.3.51m to Max.8.34m/3	Min.3.54m to Max.12.30m/5	Min.3.41m to Max.10.00m/4	Min.3.31m to Max.7.70m/3	Min.2.87m to Max.8.60m/4	Min.2.79m to Max.6.60m/3
Boom raising speed	1° to 81°/12.5s			1° to 81°/7s			1° to 81°/4.5s	
Winch single line pull	7.35kN(750kgf)			7.35kN(750kgf)			6.37kN(650kgf)	
Winch hook speed	17.0m/min at 3rd layer with 4-part line			17.0m/min at 3rd layer with 4-part line			15.5m/min at 3rd layer with 4-part line	
Winch wire rope	IWRC 6×Fi(29) Galvanized GRADE B [Breaking strength:43.3kN (4420kgf)] 8mm×80m			IWRC 6×Fi(29) Galvanized GRADE B [Breaking strength:43.3kN (4420kgf)] 8mm×73m			IWRC 6×Fi(29) Galvanized GRADE B [Breaking strength:43.3kN (4420kgf)] 8mm×54m	
Slewing range/speed	360° continuous / 2.5rpm			360° continuous / 2.5rpm			360° continuous / 2.5rpm	

UBV505J Rated loads						Unit:kg
Boom Length Working Radius	3.75m	6.15m	8.55m	10.95m	13.35m	
3.0m	3030	3030	3030			
3.5m	3030	3030	3030			
3.9m	3030(3.51)	3030	3030	2030		
4.5m		2430	2430	2030	1330	
5.0m		2130	2130	1830	1330	
5.5m		1880	1880	1650	1200	
6.0m		1650(5.91)	1650	1480	1100	
7.0m			1330	1230	950	
8.0m			1080(8.31)	1030	830	
9.0m				880	730	
10.0m				780	650	
11.0m				730(10.71)	600	
12.0m					550	
13.11m					500	

UBV504J Rated loads					Unit:kg
Boom Length Working Radius	3.57m	6.00m	8.42m	10.84m	
3.0m	3030	3030	3030		
3.5m	3030(3.33)	3030	3030	2030	
4.1m		3030	3030	2030	
4.5m		2580	2580	2030	
5.0m		2280	2280	1830	
5.5m		1930	1930	1650	
6.0m		1800(5.76)	1730	1480	
6.5m			1530	1340	
7.0m			1400	1230	
7.5m			1280	1140	
8.0m			1130(8.18)	1080	
9.0m				980	
10.0m				850	
10.6m				830	

UBV503J Rated loads				Unit:kg
Boom Length Working Radius	3.51m	5.94m	8.34m	
3.0m	3030	3030	3030	
3.55m	3030(3.27)	3030	3030	
4.1m		3030	3030	
4.5m		2580	2580	
5.0m		2280	2280	
5.5m		2000	2000	
6.0m		1880(5.7)	1730	
6.5m			1580	
7.0m			1430	
7.5m			1330	
8.1m			1230	

() :Working radius

UBV345J Rated loads						Unit:kg
Boom Length Working Radius	3.54m	5.78m	7.98m	10.14m	12.30m	
2.0m	3030	3030				
2.3m	3030	3030				
2.5m	2780	2780	2230			
2.7m	2580	2580	2230			
3.0m	2280	2280	2030			
3.5m	2030(3.35)	1930	1680			
4.0m		1630	1380	1030		
4.5m		1430	1200	930	760	
5.0m		1250	1050	830	630	
5.5m		1130(5.59)	930	780	550	
6.0m			830	730	480	
6.5m			750	680	440	
7.0m			680	630	400	
8.0m			630(7.79)	530	350	
9.0m				480	310	
10.0m				460(9.95)	280	
11.0m					250	
12.11m					250	

UBV344J Rated loads					Unit:kg
Boom Length Working Radius	3.41m	5.65m	7.825m	10.00m	
2.0m	3030	3030			
2.5m	3030	3030	2330		
2.6m	2930	2930	2330		
2.7m	2630	2630	2330		
3.0m	2330	2330	2130		
3.2m	2130(3.22)	2180	2030		
3.5m		1980	1730		
4.0m		1680	1430	1030	
4.5m		1480	1230	930	
5.0m		1280	1080	830	
5.5m		1180(5.46)	980	780	
6.0m			880	730	
6.5m			800	680	
7.0m			730	630	
8.0m			680(7.63)	560	
9.0m				500	
9.81m				480	

UBV343J Rated loads				Unit:kg
Boom Length Working Radius	3.31m	5.55m	7.70m	
2.0m	3030	3030		
2.5m	3030	3030	2330	
2.6m	3030	3030	2330	
2.7m	2930	2930	2330	
3.0m	2480	2480	2130	
3.2m	2330(3.12)	2280	2030	
3.5m		2030	1780	
4.0m		1730	1480	
4.5m		1530	1280	
5.0m		1330	1130	
5.5m		1280(5.36)	1030	
6.0m			930	
6.5m			830	
7.0m			730	
7.51m			680	

() :Working radius

UBV264J Rated loads					Unit:kg
Boom Length Working Radius	2.87m	4.80m	6.70m	8.60m	
1.6m	2630	2630			
1.8m	2230	2230			
2.0m	2030	2030			
2.2m	1830	1830			
2.5m	1530	1530			
3.0m	1430(2.70)	1280	1230		
3.5m		1080	1030		
4.0m		980	880	680	
4.5m		830(4.63)	780	580	
5.0m			680	530	
5.5m			630	480	
6.0m			580	430	
7.0m			530(6.53)	360	
8.0m				310	
8.43m				290	

UBV263J Rated loads				Unit:kg
Boom Length Working Radius	2.79m	4.72m	6.60m	
1.6m	2630	2630		
1.8m	2230	2230		
2.0m	2030	2030		
2.2m	1830	1830		
2.5m	1530	1530	1230	
3.0m	1430(2.62)	1280	1230	
3.5m		1080	1030	
4.0m		980	880	
4.5m		880(4.55)	780	
5.0m			680	
5.5m			630	
6.43m			530	

() :Working radius



NOTE

- The table shows actual working radius including a possible boom deflection with a load applied when the crane has been installed horizontally.
- Rated load is based only on the suspending strength of the crane and stability of the crane mounted ship is not considered. Therefore, operate the crane while paying utmost attention to the stability of the ship.
- The mass of hook(30kg), slings, and any accessories attached to the boom or loadline must be deducted from the above rated load in the chart.
- In accordance with our policy of constant product improvement, all specifications are subject to change without notice or obligations.

FURUKAWA UNIC CORPORATION

3-14, Nihonbashi Muromachi 2-chome, Chuo-ku, TOKYO 103-0022 JAPAN
 Phone: (81-3) 3231-8613 / Facsimile: (81-3) 3231-8261
 URL <http://www.furukawaunic.co.jp/>